

NEWNAN LAKES

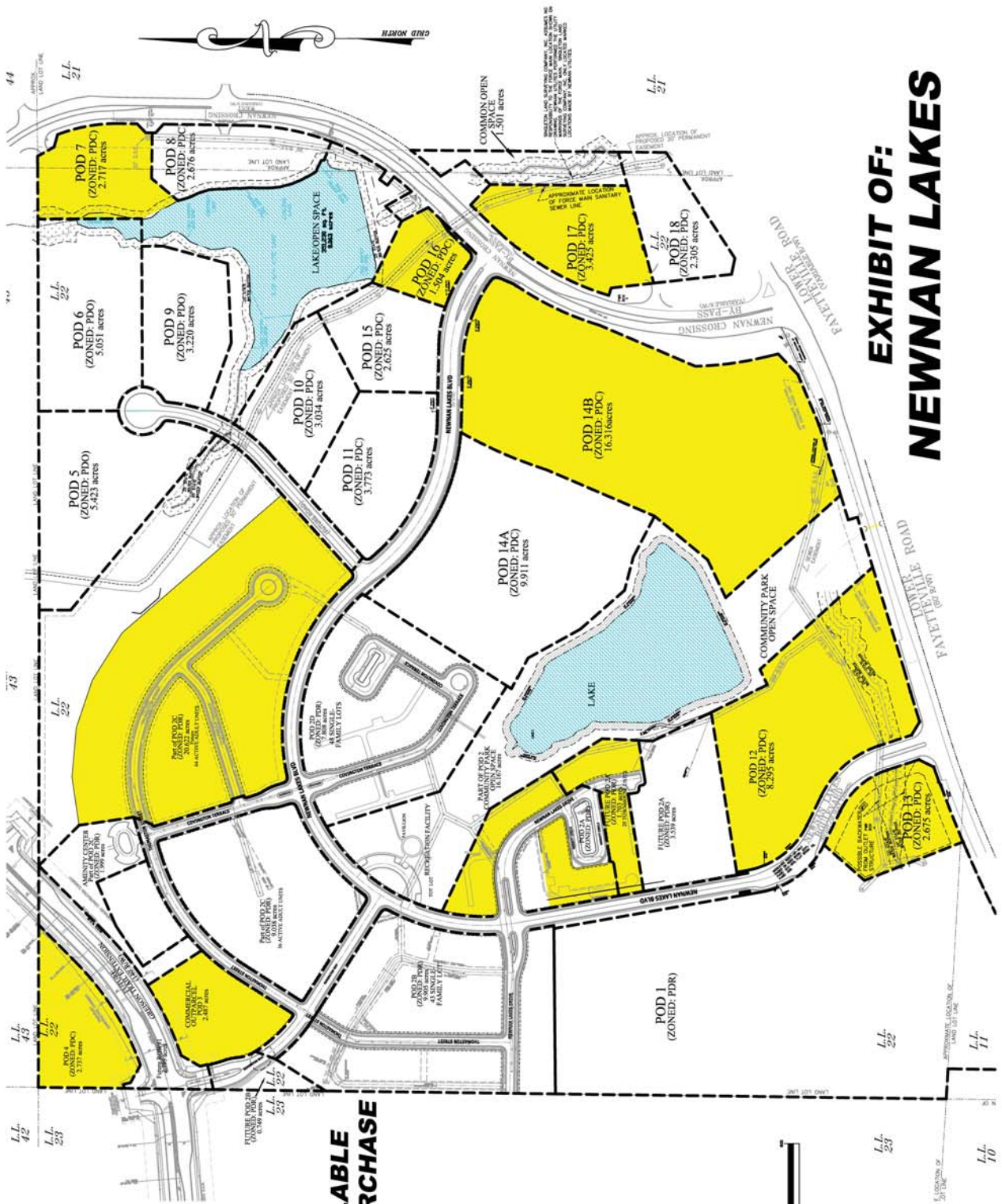
NEWNAN, GEORGIA

Project Overview: Newnan Lakes is a planned residential, commercial and office planned development located in the rapidly growing Newnan Crossing Bypass/Lower Fayetteville Road corridor of Newnan, Georgia. Existing uses at the project include a 283-lot master planned residential community, a high-end apartment complex, medical office facilities, convenience retail, a 64-bed assisted living facility, and a proposed 30-acre independent/assisted living complex.

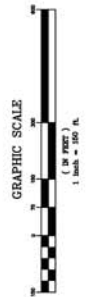
Recent development in the immediate surrounding market includes numerous residential communities, a **Publix** and **Kroger** grocery stores, shopping center, Ashley Park (a 900,000 SF power/lifestyle center) and a 1.5 million SF power retail center boasting **Target**, **Kohl's**, **Best Buy** and many other retailers. Development has recently begun on the new 362,376 SF, 136-bed Piedmont-Newnan Hospital campus. The campus is less than one mile from the Newnan Lakes Development.



EXHIBIT OF: NEWMAN LAKES



[Yellow dashed outline] = AVAILABLE FOR PURCHASE



GENERAL NOTES:
1. THE DASHED YELLOW BOUNDARIES ARE NOT A CONCEPTUAL PLAN AND DOES NOT REPRESENT A COMMITMENT TO DEVELOP. ALL RIGHTS ARE RESERVED.
2. THE DASHED YELLOW BOUNDARIES ARE NOT A COMMITMENT TO DEVELOP.
3. THE DASHED YELLOW BOUNDARIES ARE NOT A COMMITMENT TO DEVELOP.